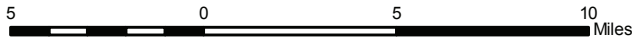
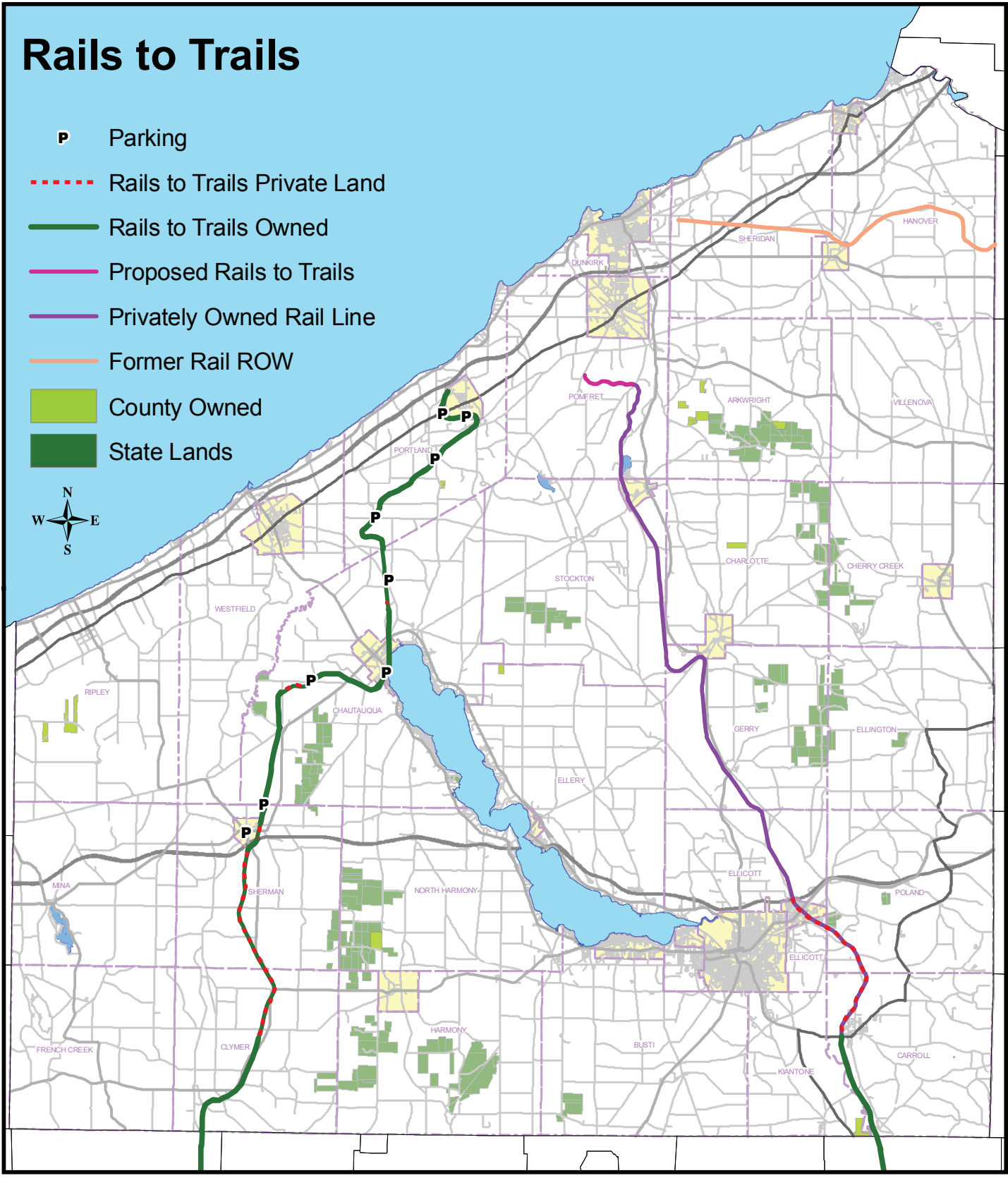


# Rails to Trails

- P** Parking
- - - - Rails to Trails Private Land
- Rails to Trails Owned
- Proposed Rails to Trails
- Privately Owned Rail Line
- Former Rail ROW
- County Owned
- State Lands



Chautauqua County's Rails to Trails is a comprehensive system of abandoned rail lines through out the county that provide cyclists' and hikers a recreational opportunity to use safe off road trails. These trails are open to walkers, runners, hikers, bicyclists, cross county skiers, bird watchers, and horseback riders alike.