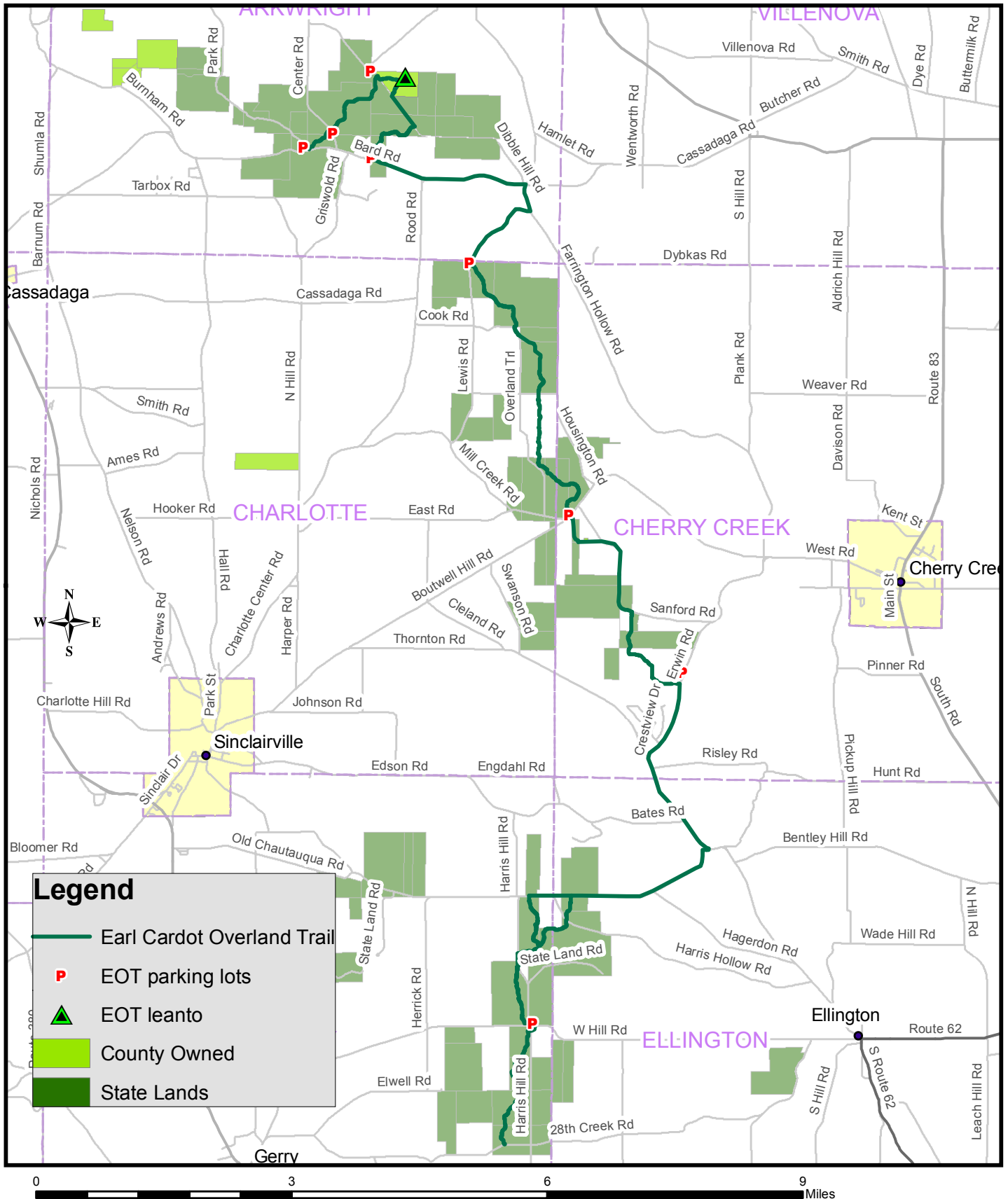


Earl Cardot Eastside Overland Trail



The Earl Cardot Eastside Overland Trail extends from the Twenty Eighth Creek Road in the Town of Gerry and proceeds northerly for 19 miles to the Canadaway Creek in the Town of Arkwright. Adirondack lean-tos, latrines, firepits and tables are at campsites along the overland trails. The trails are well marked. Parking is available near or adjoining the trail or waterways at various road crossings. Hiking, skiing, snowshoeing, and mountain biking are permitted on the trail.

Created by: CCPED