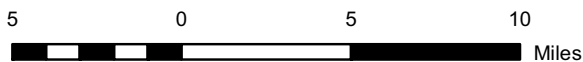
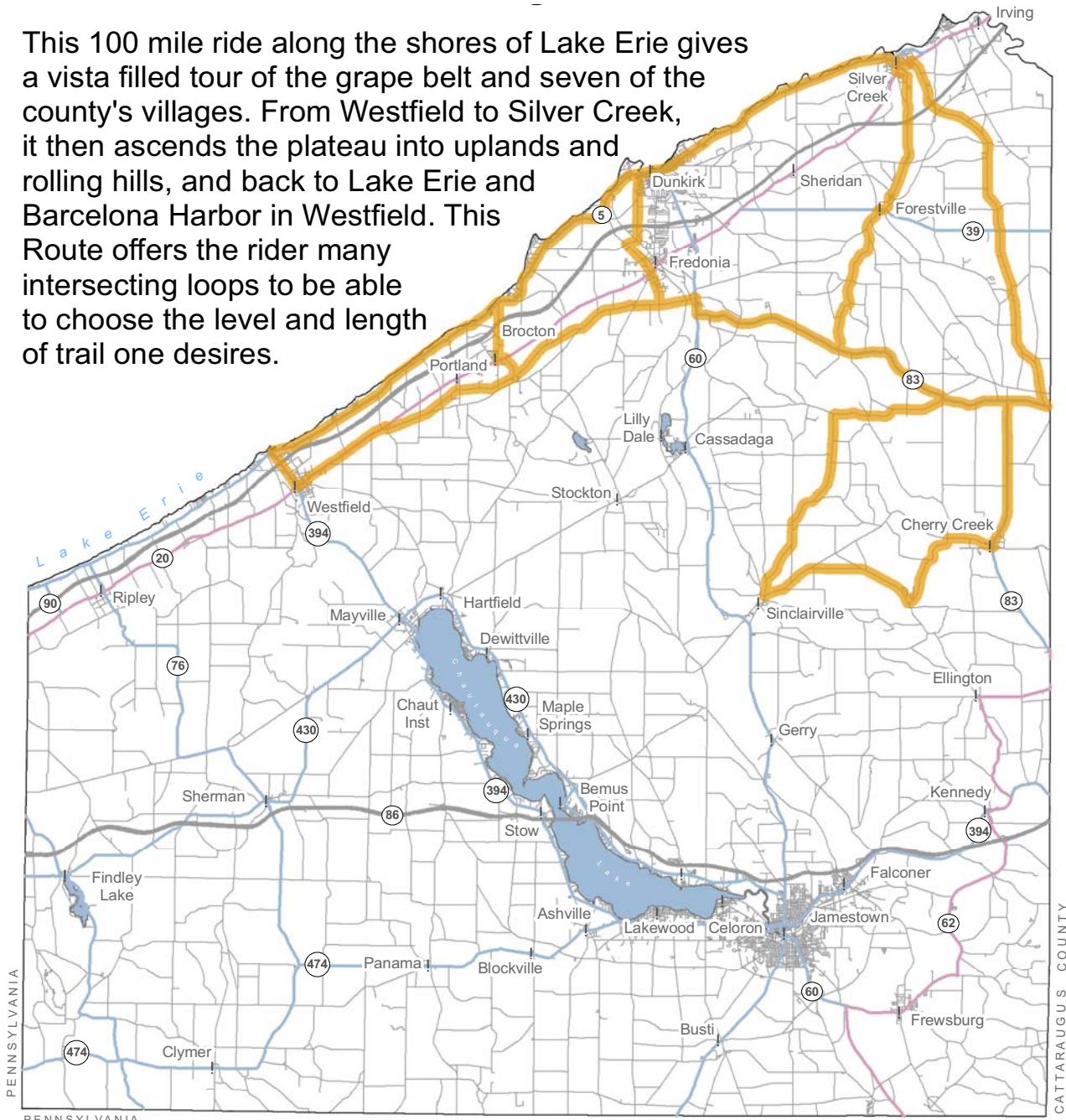


Westfield Century Ride - 100 Miles

This 100 mile ride along the shores of Lake Erie gives a vista filled tour of the grape belt and seven of the county's villages. From Westfield to Silver Creek, it then ascends the plateau into uplands and rolling hills, and back to Lake Erie and Barcelona Harbor in Westfield. This Route offers the rider many intersecting loops to be able to choose the level and length of trail one desires.



Contact us for additional information in planning your tour.
Share your comments or Bike Chautauqua experience with us.

Chautauqua County Visitors Bureau
Toll Free: 866-908-4569
<http://tourchautauqua.blog.spot.com>

- Interstate
- State Highway
- Federal Highway
- Road

Westfield Century Ride - 100 Miles

**Total
Miles Directions**

- 3.8 **Start** in Westfield: **RIGHT** on Rt. 20
- 3.9 **RIGHT** on Prospect Station Road at Bowling Alley
- 4.5 **LEFT** on Webster Road to Highland Avenue
- 8.4 **LEFT** on Highland Avenue through Brocton to Rt. 5

25 - Mile “Family Friendly” Route

- 11.4 **RIGHT** on Rt. 5 and visit Lake Erie State Park
- 25.0 **RIGHT** on Route 5 to Route 394 and **LEFT** into Village of Westfield
40-milers continue on Rt. 5 to Brigham Road, while 62, 75 & 100 Milers follow Rt. 5 to Silver Creek

40 – Mile Course

- 21.2 **RIGHT** on Brigham Road to Temple Street
- 21.6 **Cross** Temple on Matteson and **continue** to Chestnut
- 24.1 **LEFT** on Chestnut, across Route 20 and on to Seymour To Webster
- 34.9 **RIGHT** on Webster Road to Prospect Station Road
- 35.0 **RIGHT** on Prospect Station Road to Route 20
- 38.8 **LEFT** on Route 20 to Elm Street in Westfield
- 38.9 **LEFT** on Elm Street to Finish

62 – Mile Course

- 29.3 **RIGHT** on Rt. 20 in Silver Creek and **LEFT** on Rt. 85 (Burgess St)
- 34.8 **Continue STRAIGHT** on Rt. 85 to Rt. 39, Main St. arrive in Forestville
- 35.0 **RIGHT** on Rt. 39 to Water Street (Rt. 85)
- 40.6 **LEFT** on Water Street in Forestville to Rt. 83
- 46.0 **RIGHT** on Rt. 83 to Rt. 60
- 46.2 **RIGHT** on Rt. 60
- 46.6 **LEFT** turn in Laona
- 62.6 **LEFT** on Webster Road to Prospect Station Road and then follow 40-mile course home just after Laona on Webster

75 and 100 – Mile Courses

- 29.5 **Continue** on Rt. 20 up the hill and turn **RIGHT** on Rt. 93
- 43.9 **RIGHT** on Rt. 93 across Rt. 39 to Rt. 322
- 45.3 **RIGHT** on Rt. 322 and blinking light at Balcom’s Corners.
100-mile riders turn **LEFT** on Rt. 83S

75 – Mile Course

- 47.5 **Continue STRAIGHT** on Rt. 83 to Hamlet
- 56.9 **RIGHT** on Rt. 83 in Hamlet to Rt. 60
- 73.5 **Follow** Rt. 62 and then Rt. 40-Mile Course home

100 – Mile Course

- 50.7 **LEFT** at Balcom’s Corners, **continue** on Rt. 83S to Cherry Creek
- 52.4 **RIGHT** on Center St. (Rt. 68) at light in Cherry Creek (Rt. 85)
- 55.3 **LEFT** on Rt. 85 to Rt. 66
- 61.0 **RIGHT** on Rt. 66 past the Grainery/Cockaigne to Rt. 77
- 61.6 **RIGHT** on Rt. 77
- 66.2 **Follow** Rt. 77 to Rt. 72
- 70.2 **RIGHT** on Rt. 72 to Rt. 83 in Hamlet
- 96.2 **LEFT** on Rt. 83 to Rt. 60 and follow the 60-Mile Course and then 40-Mile Course home