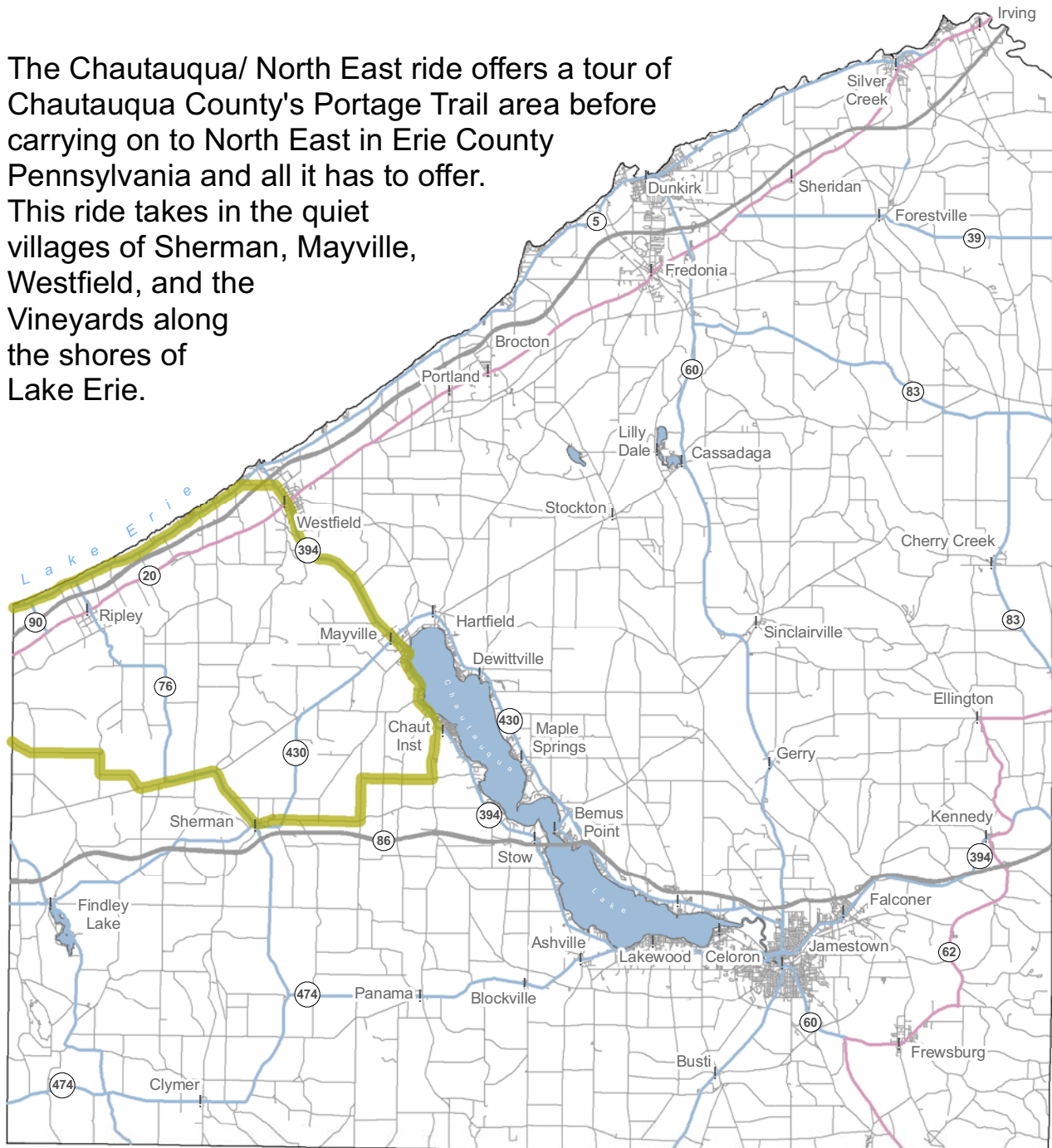
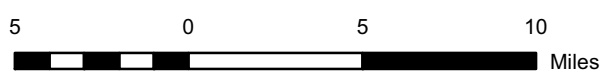


Chautauqua - North East, PA 50-Mile Ride

The Chautauqua/ North East ride offers a tour of Chautauqua County's Portage Trail area before carrying on to North East in Erie County Pennsylvania and all it has to offer. This ride takes in the quiet villages of Sherman, Mayville, Westfield, and the Vineyards along the shores of Lake Erie.



CATTARAUGUS COUNTY



- Interstate
- State Highway
- Federal Highway
- Road

Contact us for additional information in planning your tour.
Share your comments or Bike Chautauqua experience with us.

Chautauqua County Visitors Bureau
Toll Free: 866-908-4569
<http://tourtchautauqua.blog.spot.com>

CHAUTAQUA COUNTY CYCLING ROUTES

Chautauqua - North East, PA 50-Mile Ride

- 0.0 With your back to Chautauqua Institution, **RIGHT** on Rt. 394
- 0.1 **LEFT** on Davis Road Rt. 33
- 1.5 **RIGHT** on Weber
- 4.1 At the T-Stop, **LEFT** up hill
- 5.5 **RIGHT** on Rt. 18 West. Look for Buffalo on the left
- 8.2 At the Stop, **straight**
- 9.2 **LEFT** at the fire hall to downtown Sherman
- 9.3 **RIGHT** on Rt. 430. Watering holes
- 9.3 **RIGHT** on Rt. 76, Kipp St.
- 11.6 **Continue** on Rt. 76
- 13.3 **LEFT** on Jct. 6 at the bottom of the hill
- 16.7 South Ripley Church. Continue
- 19.9 PA/NY State Line. Begin long downhill.
- 21.5 **Merge** onto Rt. 426
- 22.2 **LEFT** on Shaddock
- 23.4 At the T-Stop, **RIGHT** on Washington
- 23.9 At the Stop, **Straight**. RR Tracks
- 24.3 **LEFT** on East St.
- 24.6 Lake Country Bike and downtown North East
- 24.6 With you back to Lake Country Bike, **LEFT** on Main St.
- 24.7 **RIGHT** on Rt. 89 North, Lake St.
- 25.5 After the Church, **RIGHT** on Middle Rd.
- 29.5 At the T-Stop, **RIGHT** on Rt 5
- 38.0 **RIGHT** on Rogersville Rd.
- 39.2 **LEFT** on Rt. 20
- 42.5 **RIGHT** on Rt. 394. Climb, climb, CLIMB!
- 48.8 Downtown Mayville, **continue** on Rt. 394
- 52.6 Back to Chautauqua Institution