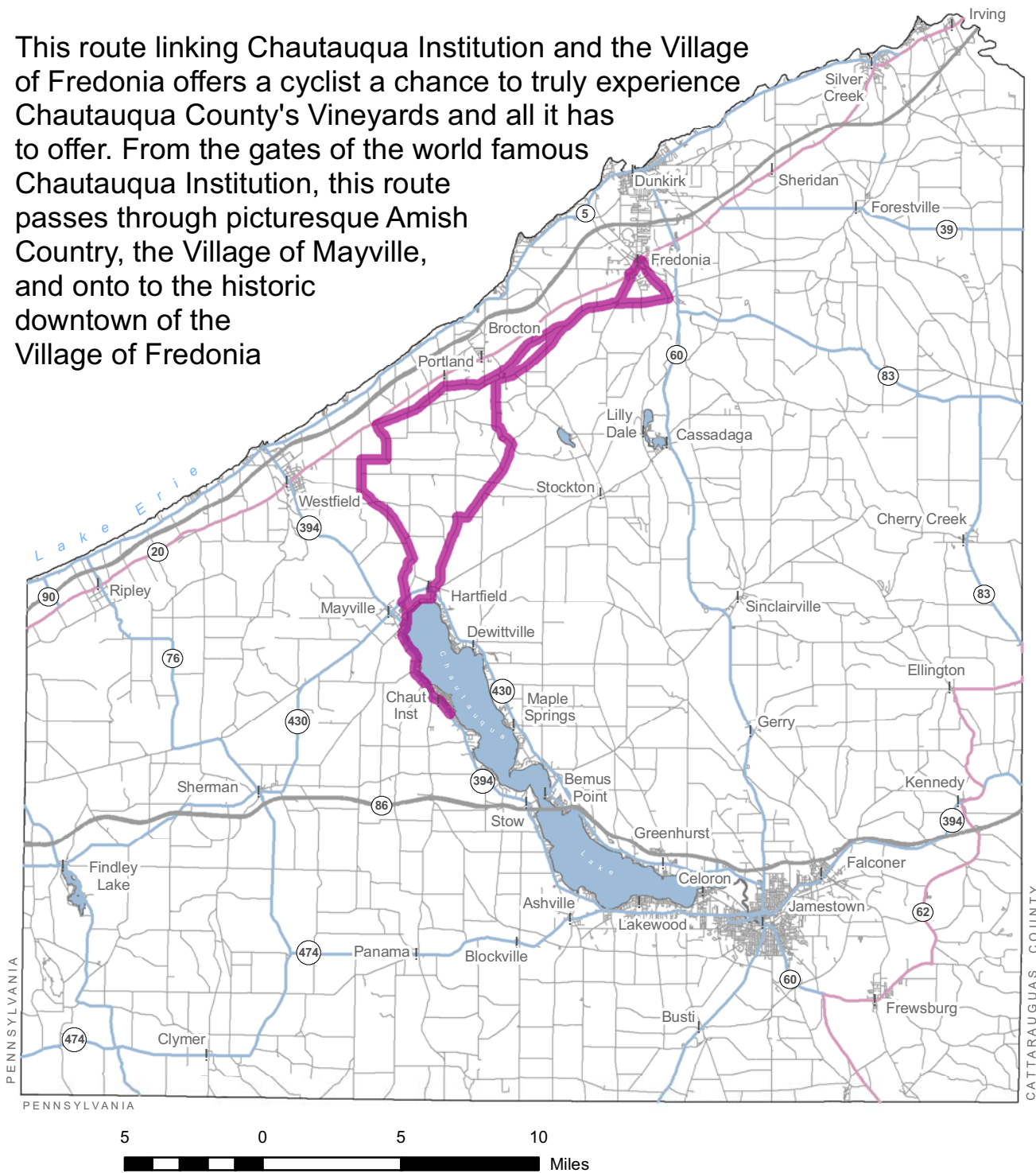


Chautauqua - Fredonia 50-Mile Ride

This route linking Chautauqua Institution and the Village of Fredonia offers a cyclist a chance to truly experience Chautauqua County's Vineyards and all it has to offer. From the gates of the world famous Chautauqua Institution, this route passes through picturesque Amish Country, the Village of Mayville, and onto to the historic downtown of the Village of Fredonia



- Interstate
- State Highway
- Federal Highway
- Road

Contact us for additional information in planning your tour.
Share your comments or Bike Chautauqua experience with us.

Chautauqua County Visitors Bureau
Toll Free: 866-908-4569
<http://tourchautauqua.blog.spot.com>

CHAUTAQUA COUNTY CYCLING ROUTES

Chautauqua - Fredonia 50-Mile Ride

- 0.0 With your back to Chautauqua Institution, turn **RIGHT** on Rt. 394
- 3.0 **RIGHT** on Lakeview Ave.
- 3.5 **RIGHT** on Sea Lion Rd.
- 4.5 At the T-Stop, **LEFT** on Mill St.
- 4.9 **Cross** Rt. 430, continue **straight**
- 5.0 **RIGHT**, East on Rt. 54
- 5.2 **LEFT** on Elm Flats Rd. towards Luensman's Overview Park
- 7.9 **RIGHT** at the farm at the top of the hill
- 8.3 **LEFT** on Walker Rd.
- 9.2 T-Stop, **LEFT** on No-Name Rd.
- 11.4 T-Stop, **LEFT** on Rt. 380 North, long down-hills
- 14.0 Merge onto Ellicott
- 14.2 **RIGHT** on Ellicott
- 16.3 Hanson Hill, stay on Ellicott
- 19.4 **RIGHT** on Webster Rd.
- 19.6 At the stop, **straight**
- 21.5 **LEFT** at the Stop, Rt. 73 north
- 23.1 **LEFT** on Main St. and downtown Fredonia
- 23.8 **LEFT** on Chautauqua St. at the Dodge Dealer
- 24.9 **RIGHT** on Rood Rd., merge on to Webster Rd.
- 27.0 **Merge** right at the Y
- 27.1 At the stop, **straight**
- 30.2 **RIGHT** on Webster Rd.
- 35.0 **LEFT** on Prospect Station Rd.
- 36.7 **RIGHT** on Finley Rd.
- 37.7 At the stop, **LEFT** on Felton Rd.
- 38.8 **LEFT** on Rt. 29 south, (Plank Rd.)
- 42.0 **RIGHT** on Rt. 27 south, (Honeysette)
- 43.6 **RIGHT** on Rt. 430.
- 43.8 **LEFT** on Lakeview Ave.
- 46.7 **LEFT** on Rt. 430 (Erie St.)
- 50.0 **Continue** to Chautauqua Institution